

top D  
fast top Eb

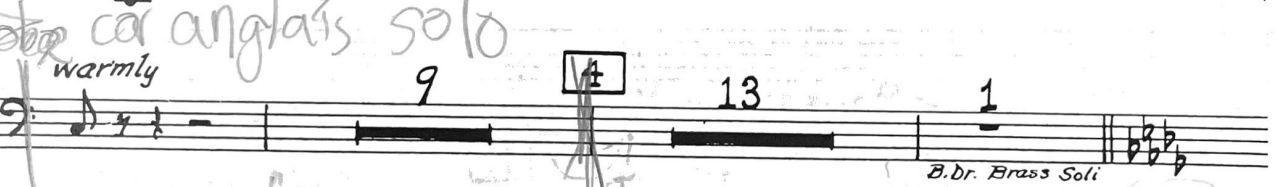
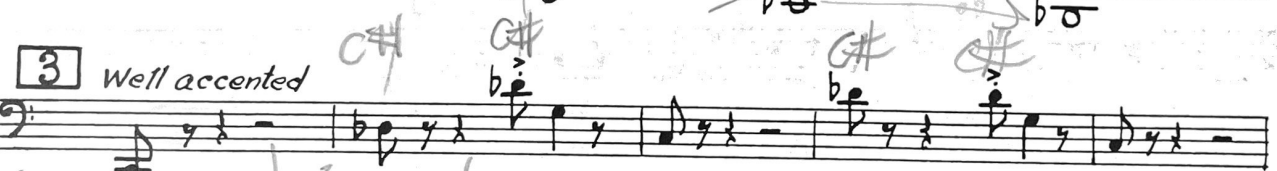
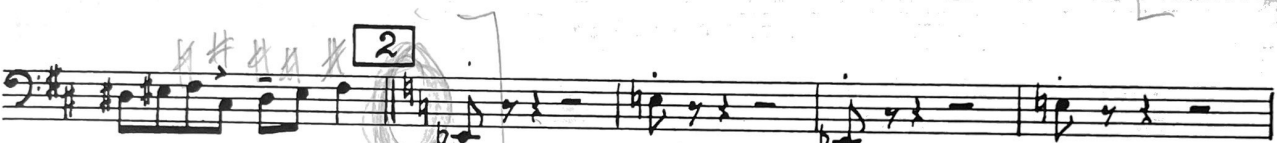
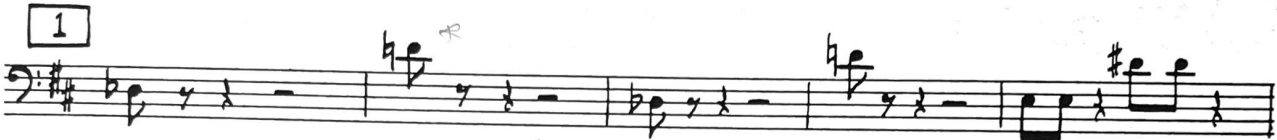
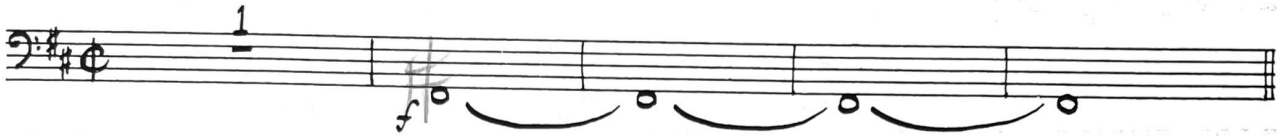
SET No. 6

# CUBAN OVERTURE

Contrabassoon

GEORGE GERSHWIN

*Moderato e molto ritmato* (♩ = 92)



U.S.

© MCMXXXIII by NEW WORLD MUSIC CORPORATION  
Copyright renewed  
ALL RIGHTS RESERVED INCLUDING PUBLIC PERFORMANCE FOR PROFIT

Please return to:  
G. Schirmer, Inc.  
50 West 57th St.  
New York, N.Y. 10019



Contrabassoon

14 7 Bass Cl.

15

16

17

18

6 Cad.

19 *Sostenuto* (♩ = 76) 20 21

10 12 4

Contrabassoon

*Poco rubato* 22 *Sostenuto come sopra* 23 *Bass*

24 *sf-mf* 25

*Broadly*

26 *Allegretto ritmato (♩ = 104)*  
*Solo*  
*ff atempo* *f*

27 *mp*

28 *f* *mp* *f*

29 *accentedly* *p* *p*

Contrabassoon

30 *p* *f*

*mf*

31 *mf*

*cresc.* *f*

32 *cresc.* *ff*

4 33 *ff*

1

34 *f* *Grandly, only slightly slower*

*f*

*f*

35 *Animato* 36

37 *fz-p* *poco a poco cresc.* *mf*

*ff*